



FabLink®-MD25.4.GAP%48

Bakery Applications

Including Oven Infeed - Outfeed, Coating Lines, Glazing Lines, Freezing Lines, Conditioning Lines, Cooling Lines

Poultry Applications

Cooling and Freezing Lines

Seafood Applications

Including Breeding Machines, Draining Lines

Snack Food Applications

Including Proofer Lines, Boiler Infeed, Oven Infeed - Outfeed, Cooling Lines

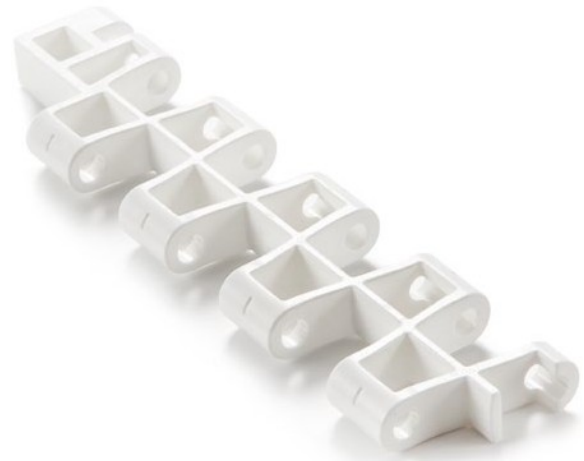
Fruits and Vegetables Applications

Including Prewashing / Rinsing, Draining

Packing Industry

Shrink Tunnels

FabLink®-MD25.4.GAP%48



Pitch	25.7 mm / 1 inch
Belt surface	Open, Smooth Surface
Minimum width	203.2 mm / 8 inch
Open Area (%)	48% (Biggest opening 9 x 13.5 mm and 6 x 16.5 mm)
Cleat	Yes (T50)
Sidewall	No
Pin	Ø 5 mm / 0,197 inch Self Lock
Approved	FDA and EU
Curve	No
Color	Additional colors available
Cleanability	Excellent
Belt thickness	11 mm / 0,433 inch

Product Features and Functional Benefits

- Belt provides optimal open area for drainage and airflow.
- Less friction and product contact for easy cooking, cooling and freezing of products.
- Reduced dirt and oxide build due to self cleaning surface.
- Stainless steel pins option for high temperature applications
- Easy to clean reduces downtime for cleaning time 70%
- Stainless steel pins option reduce belt elongation for high temperature application

Available Moulded Module Sizes

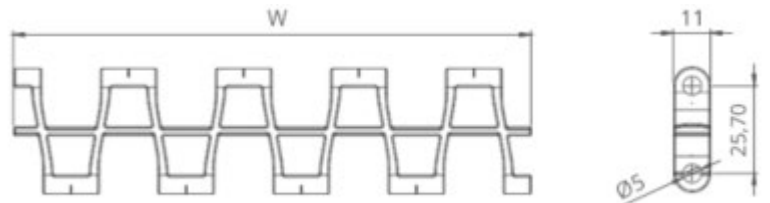
- 152.4 mm / 6 inch module
- 85 mm / 3.35 inch module

Technical Information

BELT MATERIAL	BELT STRENGTH				TEMPERATURE		BELT WEIGHT Kg/m ² / lb/ft ²
	Straight		Curve		°C / ° F (min.)	°C / ° F (max.)	
	N/mm	lb/ft	N/mm	lb/ft			
PP (Polypropylene)	12100	829	-	-	+5 / +41	+90 / +194	4,2 / 0.85
PE (Polyethylene)	-	-	-	-	-	-	-
POM (Polyacetal)	17050	1168	-	-	-43 / -45	+110 / +230	6,4 / 1.33

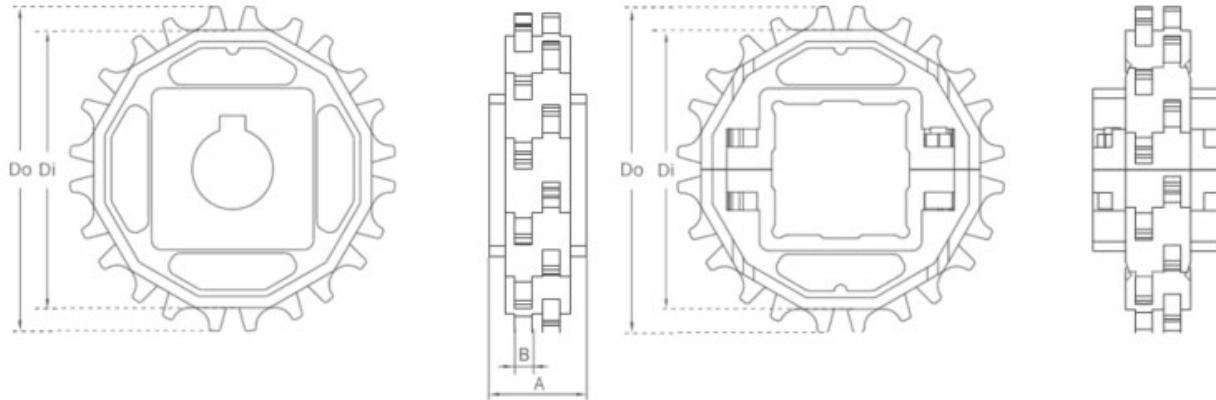
Standard Belt Widths

WIDTH (W)				BELT WIDTH TOLERANCE (max.)
PP-PE		POM		
mm	inch	mm	inch	
203,2	8.0	203,2	8.0	± 0,5 mm
237,0	9.0	237,0	9.0	± 1 mm
270,8	11.0	270,8	11.0	± 1 mm
304,6	12.0	304,6	12.0	± 1 mm
338,4	13.0	338,4	13.0	± 2 mm
372,2	15.0	372,2	15.0	± 2 mm
406,0	16.0	406,0	16.0	± 2 mm
439,8	17.0	439,8	17.0	± 2 mm
473,6	19.0	473,6	19.0	± 2 mm
507,4	20.0	507,4	20.0	± 2 mm
541,2	21.0	541,2	21.0	± 2 mm
575,0	23.0	575,0	23.0	± 2 mm
608,8	24.0	608,8	24.0	± 3 mm
642,6	25.0	642,6	25.0	± 3 mm



Bigger sizes are available with 33,8 mm increments
Please contact with customer service for precise belt measurements

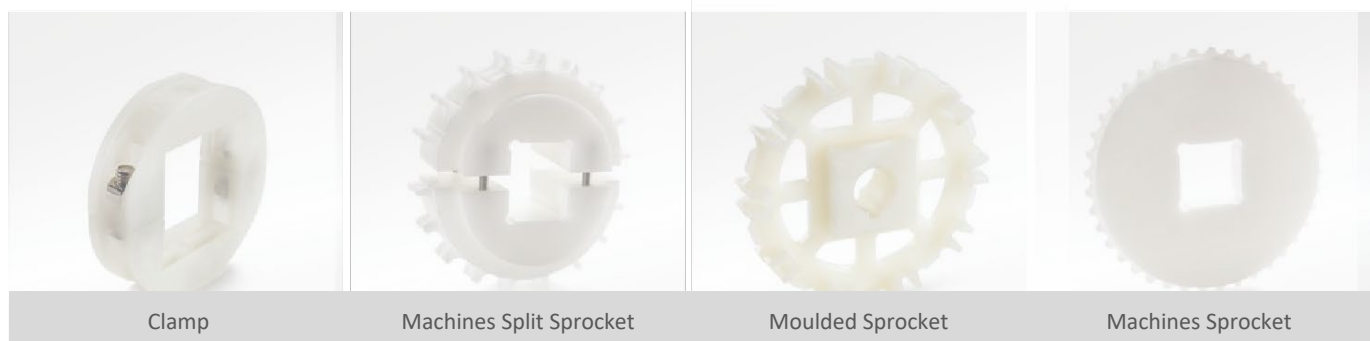
Sprockets and Technical Specifications



Standard Sprocket Dimensions

NUMBER OF TEETH	Di mm / inch	Do mm / inch	B mm / inch	A mm / inch	Square Bore (Q) mm / inch	Round Bore (R) mm / inch	PRODUCT CODE	
							Square Type (Q)	Round Type (R)
Z8	52,0 / 2.05	67,0 / 2.64	6 / 0.24	30 / 1.18	25 / 1	25 / 1	FL-MD-TR-254SQ25Z8	FL-MD-TR-254SRZ8
Z10	69,0 / 2.72	84,0 / 3.31	6 / 0.24	30 / 1.18	40 / 1.5	25-30 / 1-1.25	FL-MD-TR-254SQZ10	FL-MD-TR-254SRZ10
Z12	85,8 / 3.38	100,8 / 3.97	6 / 0.24	30 / 1.18	40 / 1.5	25-30 / 1-1.25	FL-MD-TR-254SQZ12	FL-MD-TR-254SRZ12
Z15	110,8 / 4.36	125,8 / 4.95	6 / 0.24	30 / 1.18	40 / 1.5	25-30 / 1-1.25	FL-MD-TR-254SQZ15	FL-MD-TR-254SRZ15
Z16	119,1 / 4.69	134,1 / 5.28	6 / 0.24	30 / 1.18	40 / 1.5	25-30 / 1-1.25	FL-MD-TR-254SQZ16	FL-MD-TR-254SRZ16
Z18	135,6 / 5.34	150,6 / 5.93	6 / 0.24	30 / 1.18	40 / 1.5	25-30 / 1-1.25	FLMD-TR-254SQZ18	FL-MD-TR-254SRZ18
Z20	150,7 / 5.93	167,3 / 6.59	6 / 0.24	30 / 1.18	40 / 1.5	25-30 / 1-1.25	FL-MD-TR-254SQZ20	FL-MD-TR-254SRZ20

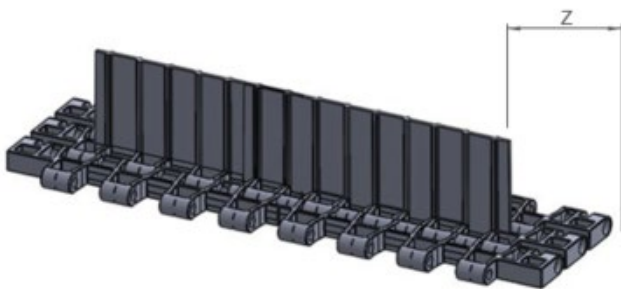
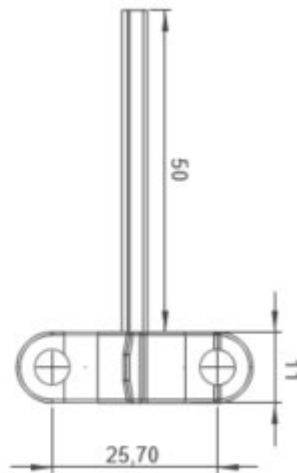
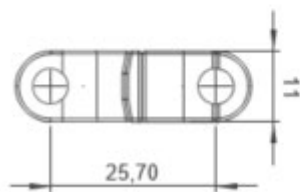
- * Other sprockets and hub sizes are manufactured upon request
- * PA (Polyamide) and PP (Polypropylene) sprockets are available upon request
- * Machined split sprockets are available for each size



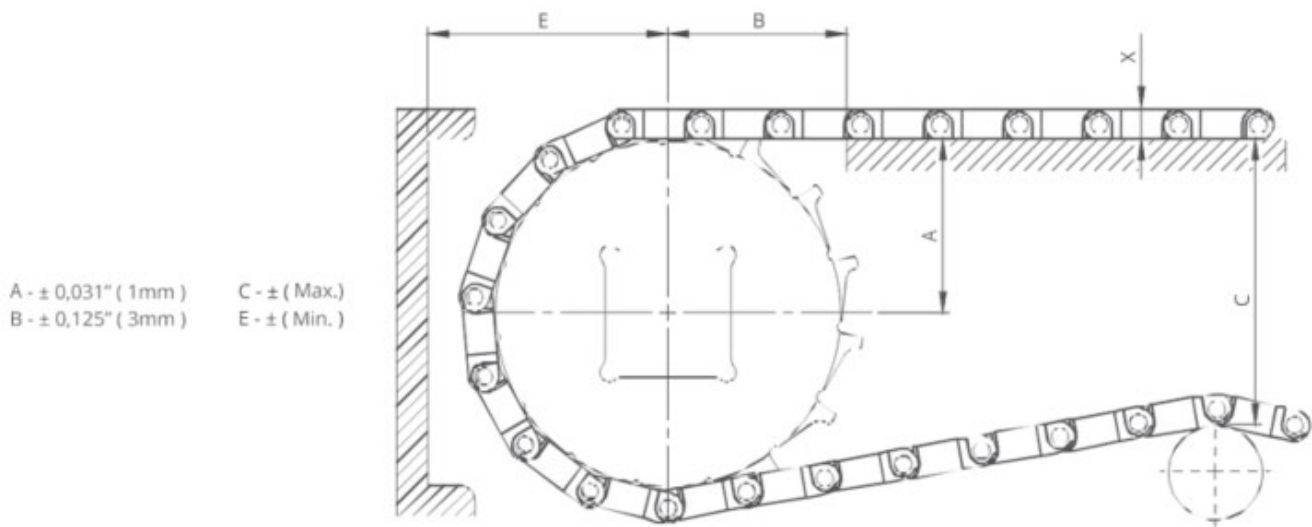


FabLink®MD25.4.GAP.%.48 Serie / Cleats

Product code	Cleat Height (mm / inch)	Cleat Width (mm / inch)	Product code	Sidewall Height (mm / inch)
FL-MD-254G48T50	50 / 2	152 / 6	-	-



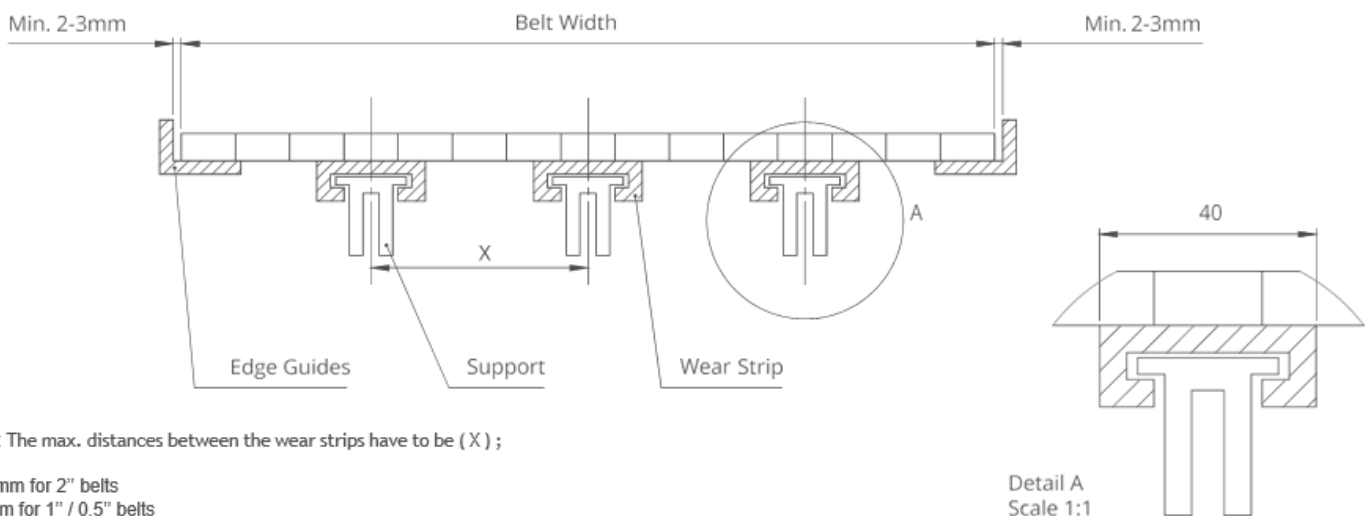
POSSIBLE CLEATS	Z	
	mm	inch
Standard, no module cutting	35.0	1.38
Standard, module cutting	68.8	2.71
Standard, module cutting	102.6	4.04



Conveyor Frame Dimensions

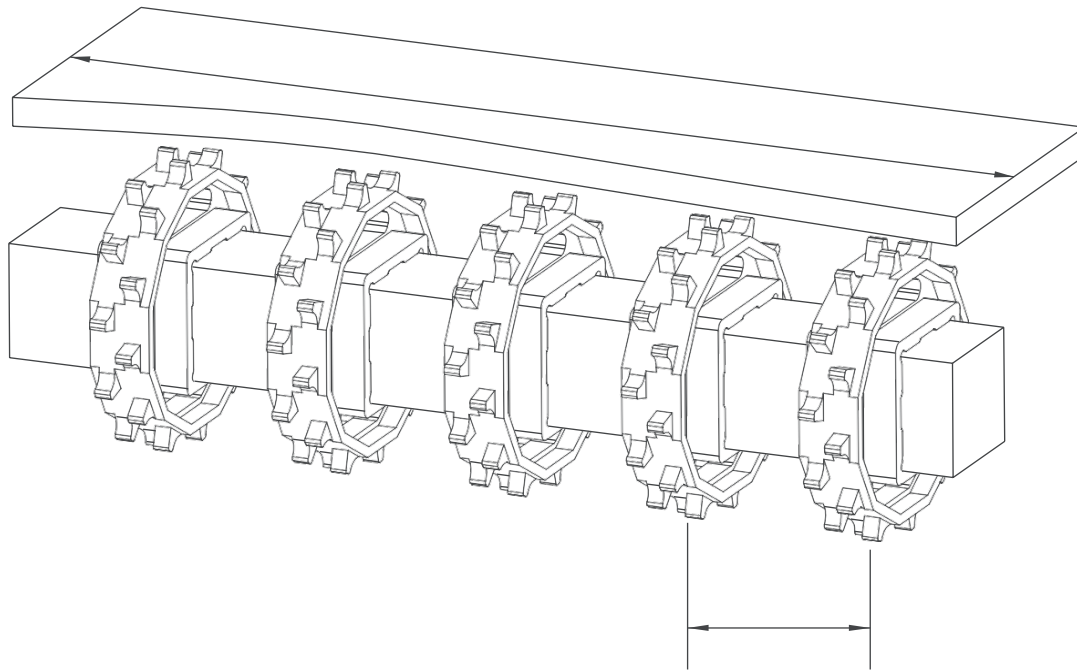
SPROCKETS DESCRIPTION		A		B		C		E		X		
Pitch Diameter		Range (Bottom to Top)		inch	mm	inch	mm	inch	mm	inch	mm	
inch	mm	inch	mm									
FabLink®MD25.4.FG, FabLink®MD25.4.C												
2.38	60,5	8	1.15	29,2	1.55	39,4	1.95	49,5	1.94	49,2	0.39	10,0
3.07	78,0	10	1.46	37,1	1.77	45,0	2.60	66,1	2.25	57,1	0.39	10,0
3.74	95,0	12	1.76	44,8	1.97	50,1	3.24	82,3	2.55	64,8	0.39	10,0
4.70	119,5	15	2.22	56,4	2.23	56,7	4.18	106,1	3.01	76,4	0.39	10,0
5.02	127,5	16	2.37	60,2	2.38	60,5	4.46	113,2	3.21	81,5	0.39	10,0
5.71	145,0	18	2.73	69,3	2.45	62,3	5.19	131,8	3.51	89,3	0.39	10,0

Slider Support System for Straight Running Belts



Note: The max. distances between the wear strips have to be (X) ;

125 mm for 2" belts
80 mm for 1" / 0.5" belts



Sprockets Arrangement

Standard Belt Width		Number of sprockets per shaft		A (mm/inch)	
mm	inch	Drive Shaft	Return Shaft	Min.	Max.
203,2	8.0	2	2	60 / 2.36	170 / 6.6
237,0	9.3	2	2	60 / 2.36	170 / 6.6
270,8	10.7	2	2	60 / 2.36	170 / 6.6
304,6	12.0	3	2	60 / 2.36	170 / 6.6
338,4	13.3	3	2	60 / 2.36	170 / 6.6
372,2	14.7	4	3	60 / 2.36	170 / 6.6
406,0	16.0	4	3	60 / 2.36	170 / 6.6
439,8	17.3	4	3	60 / 2.36	170 / 6.6
473,6	18.6	5	3	60 / 2.36	170 / 6.6
507,4	20.0	5	3	60 / 2.36	170 / 6.6
541,2	21.3	5	3	60 / 2.36	170 / 6.6
575,0	22.6	5	3	60 / 2.36	170 / 6.6
608,8	24.0	6	4	60 / 2.36	170 / 6.6
642,6	25.3	6	4	60 / 2.36	170 / 6.6
676,4	26.6	6	4	60 / 2.36	170 / 6.6
710,2	28.0	7	4	60 / 2.36	170 / 6.6
744,0	29.3	7	4	60 / 2.36	170 / 6.6
777,8	30.6	7	4	60 / 2.36	170 / 6.6
811,6	32.0	7	4	60 / 2.36	170 / 6.6

Note: number of sprockets depends on belt load