



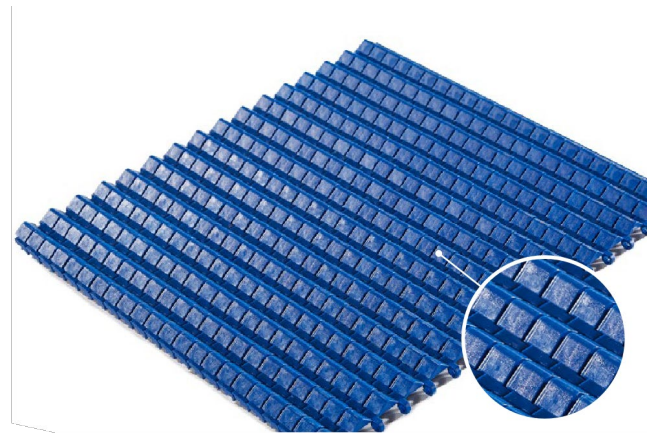
FabLink®-HC12.7.BLB

Fruits and Vegetables Applications

Sorter Lines

FabLink®-HC12.7.BLB

Pitch	12.7 mm / 0.5 inch
Belt surface	Close, Pyramide surface
Minimum width	121.74 mm / 4.79 inch
Open Area (%)	0%
Cleat	No
Sidewall	No
Pin	Ø 4,5 mm / 0,177 inch
Approved	FDA and EU
Curve	No
Color	Additional colors available
Cleanability	Excellent
Belt thickness	13.56 mm / 0,534 inch



Product Features and Functional Benefits

- Easy to clean reduces downtime for cleaning time 80%.
- Unique sprocket engagement - higher product load and longer conveyors.
- Special design for sorter lines – Especially for blueberries
- Reduces bacteria growth.

Available Moulded Module Sizes

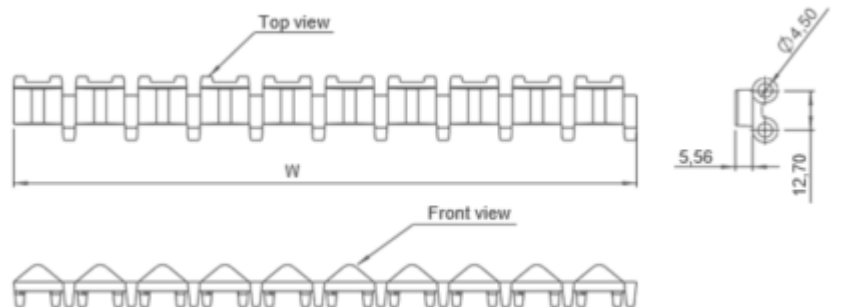
- 160 mm / 6.30 inch module
- 164 mm / 6.46 inch module
- 203 mm / 8 inch module
- 160 mm / 6.30 inch module

Technical Information

BELT MATERIAL	TENSILE STRENGTH				TEMPERATURE		BELT WEIGHT Kg/m ² / lb/ft ²
	Straight		Curve		°C / ° F (min.)	°C / ° F (max.)	
	N/mm	lb/ft	N/mm	lb/ft			
PP (Polypropylene)	-	-	-	-	-	-	-
PE (Polyethylene)	-	-	-	-	-	-	-
POM (Polyacetal)	5170	354	-	-	-43 / -45	+110 / +230	9,1 / 1.86

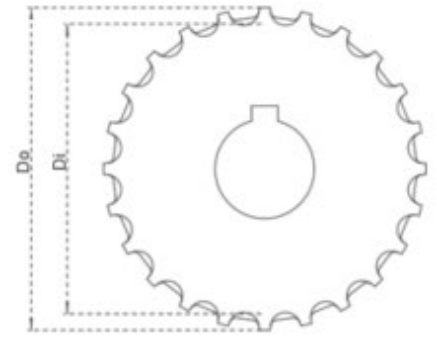
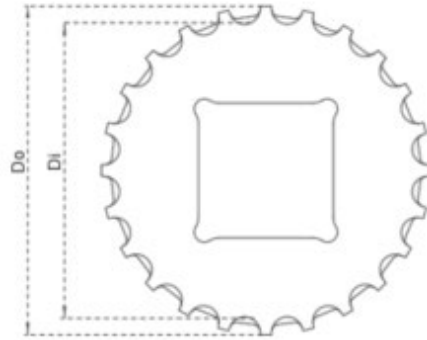
Standard Belt Widths

WIDTH (W)				BELT WIDTH TOLERANCE (max.)
PP-PE		POM		
mm	inch	mm	inch	
-	-	323,64	12.78	± 1 mm
-	-	426,09	16.78	± 1 mm
-	-	527,54	20.77	± 1 mm
-	-	629,00	24.76	± 1 mm
-	-	730,44	28.76	± 2 mm
-	-	831,89	32.75	± 2 mm
-	-	933,34	36.75	± 2 mm
-	-	1034,79	40.75	± 2 mm
-	-	1136,24	44.75	± 2 mm



- Standard belt increments 76,2mm
 - Non-standard belt increments 15,2mm
- Please contact with customer service for precise belt measurements

Sprockets and Technical Specifications



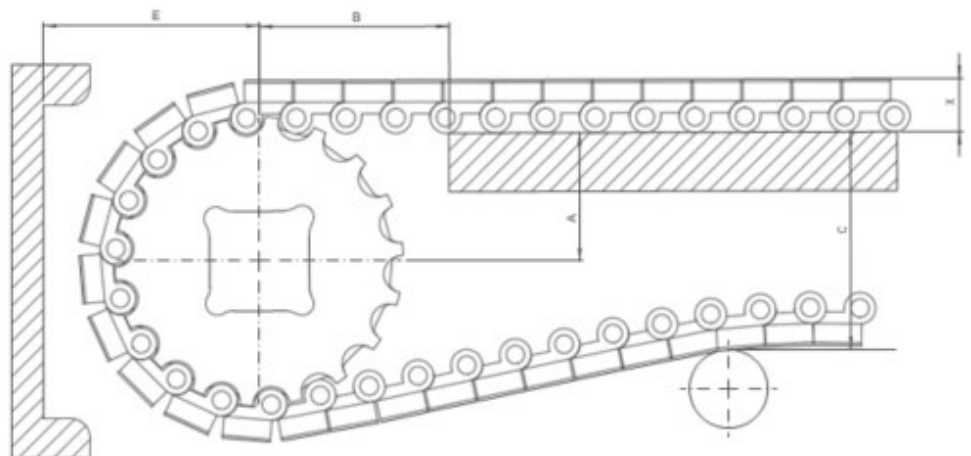
Standard Sprocket Dimensions

NUMBER OF TEETH	Di mm / inch	Do mm / inch	B mm / inch	A mm / inch	Square Bore (Q) mm / inch	Round Bore (R) mm / inch	PRODUCT CODE	
							Square Type (Q)	Round Type (R)
Z15	51,9 / 2.04	61,4 / 2.42	2 / 0.08	25 / 1.0	25 / 1-1.25	25-30 / 1-1.25	FL-HC-127SQZ15	FL-HC-127SRZ15
Z16	55,9 / 2.20	65,5 / 2.58	2 / 0.08	25 / 1.0	25 / 1-1.25	25-30 / 1-1.25	FL-HC-127SQZ16	FL-HC-127SRZ16
Z17	59,9 / 2.36	69,5 / 2.74	2 / 0.08	25 / 1.0	25 / 1-1.25	25-30 / 1-1.25	FL-HC-127SQZ17	FL-HC-127SRZ17
Z18	63,9 / 2.52	73,6 / 2.90	2 / 0.08	25 / 1.0	25-40 / 1-1.50	25-30 / 1-1.25	FL-HC-127SQZ18	FL-HC-127SRZ18
Z19	68,0 / 2.68	77,7 / 3.06	2 / 0.08	25 / 1.0	25-40 / 1-1.50	25-30 / 1-1.25	FL-HC-127SQZ19	FL-HC-127SRZ19

- * All required sprockets produced by CNC
- * Other sprockets and hub sizes are manufactured upon request
- * POM (Polyacetal) and PP (Polypropylene) sprockets are available upon request
- * Machined split sprockets are available for each size

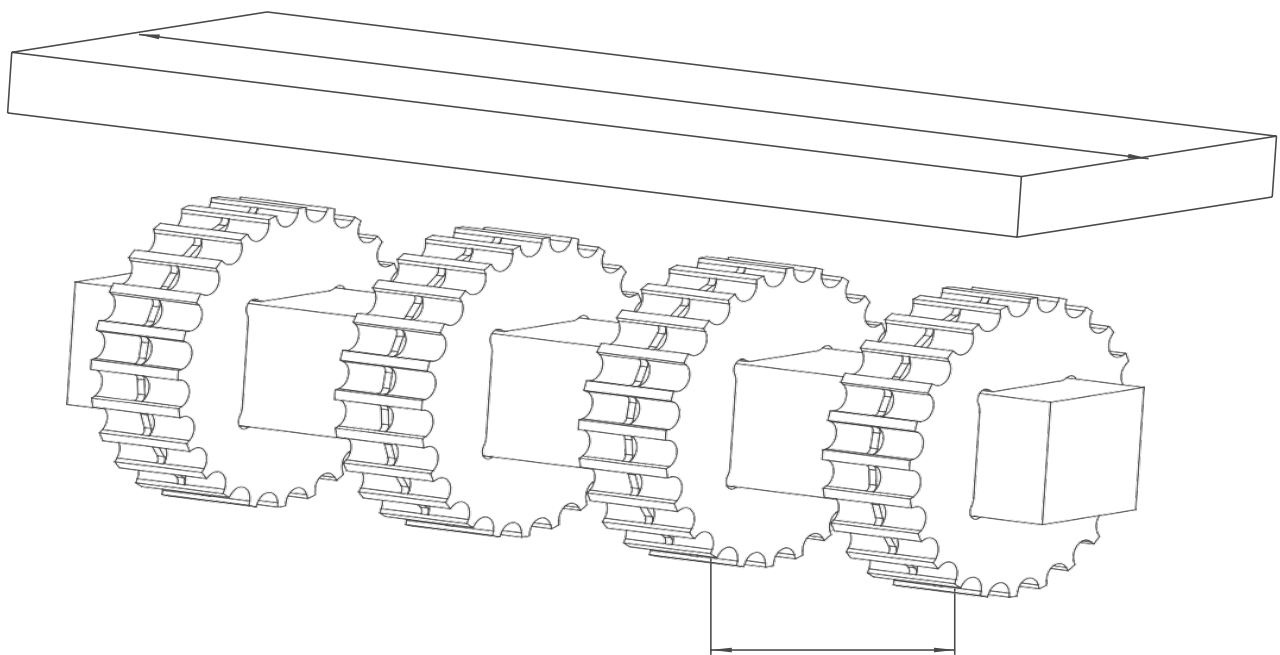
Engineering Information

A - ± 0,031" (1mm)
B - ± 0,125" (3mm)
C - ± (Max.)
E - ± (Min.)



Conveyor Frame Dimensions

SPROCKETS DESCRIPTION			A		B		C		E		X	
Pitch Diameter		Number of teeth	Range (Bottom to Top)		inch	mm	inch	mm	inch	mm	inch	mm
inch	mm		inch	mm								
FabLink®HC12.7.C												
3.09	78,4	19	1.37	34,7	1.56	39,7	1.94	49,4	1.84	46,7	0.31	8,0
3.86	98,0	24	1.77	44,9	1.97	50,0	2.75	69,8	2.24	56,9	0.31	8,0
5.83	148,0	36	2.74	69,5	2.94	74,7	4.69	119,0	3.21	81,5	0.31	8,0
FabLink®HC12.7.BLB												
3.09	78,4	19	1.37	34,7	1.56	39,7	2.17	55,0	2.06	52,3	0.53	13,56
3.86	98,0	24	1.77	44,9	1.97	50,0	2.97	75,4	2.46	62,5	0.53	13,56
5.83	148,0	36	2.74	69,5	2.94	74,7	4.90	124,6	3.43	87,1	0.53	13,56



Sprockets Arrangement

Standard Belt Width		Number of sprockets per shaft		A (mm/inch)	
mm	inch	Drive Shaft	Return Shaft	Min.	Max.
121,74	4.79	2	2	50 / 2	100 / 4
223,19	8.79	3	2	50 / 2	100 / 4
324,64	12.78	4	3	50 / 2	100 / 4
426,09	16.78	5	3	50 / 2	100 / 4
527,54	20.77	6	4	50 / 2	100 / 4
628,99	24.76	7	5	50 / 2	100 / 4
730,44	28.76	8	6	50 / 2	100 / 4
831,89	32.75	9	7	50 / 2	100 / 4
933,34	36.75	10	8	50 / 2	100 / 4
1034,79	40.74	11	9	50 / 2	100 / 4
1136,24	44.73	12	9	50 / 2	100 / 4