



FabLink®-HC12.7.C

Meat (Beef and Pork) Applications

Fat - Trim Lines, General Conveyence, Packing Lines, Elevator

Poultry Applications

Debonning, Trim Lines, Offal - Feather Lines, Grading Lines, Freezing Lines, Elevator

Seafood Applications

Inspection Tables, Grading Lines, Trim Lines

Bakery Applications

Row Dough Handling, Cooling Lines, Packing Lines

Snack Food Applications

Corn Processing

Fruits and Vegetables Applications

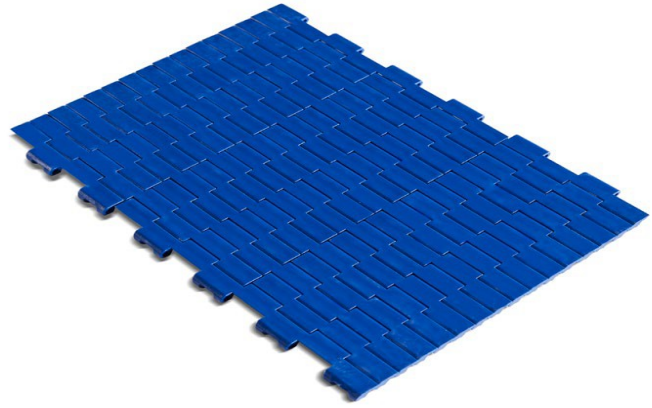
Bulk Feeding, Elevator, Control - Sorting Table

Packaging Applications

Labelling, Palletizing - Depalletizing

FabLink®-HC12.7.C

Pitch	12.7 mm / 0.5 inch
Belt surface	Close, Smooth surface
Minimum width	101.6 mm / 4 inch
Open Area (%)	0%
Cleat	No
Sidewall	No
Pin	Ø 4,5 mm / 0,177 inch
Approved	FDA and EU
Curve	No
Color	Additional colors available
Cleanability	Excellent
Belt thickness	8 mm / 0,315 inch



Product Features and Functional Benefits

- Easy to clean reduces downtime for cleaning time 80%.
- Unique sprocket engagement - higher product load and longer conveyors.
- Close transfer applications.
- Reduces bacteria growth.
- Easy to clean reduces downtime for cleaning time 80%.

Available Moulded Module Sizes

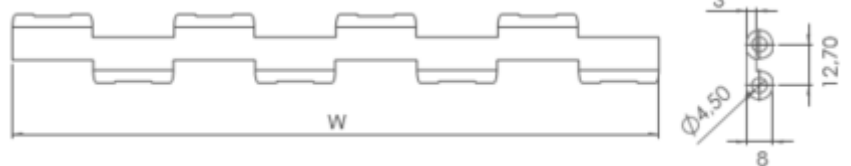
- 203.2 mm / 8 inch module
- 101.6 mm / 4 inch module

Technical Information

BELT MATERIAL	TENSILE STRENGTH				TEMPERATURE		BELT WEIGHT Kg/m ² / lb/ft ²
	Straight		Curve		°C / ° F (min.)	°C / ° F (max.)	
	N/mm	lb/ft	N/mm	lb/ft			
PP (Polypropylene)	2750	188	-	-	+5 / +41	+90 / +194	3,8 / 0.78
PE (Polyethylene)	-	-	-	-	-	-	-
POM (Polyacetal)	5170	354	-	-	-43 / -45	+110 / +230	5,7 / 1.17

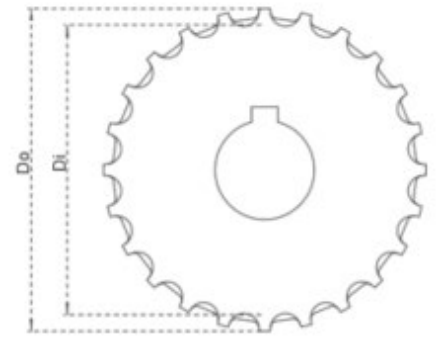
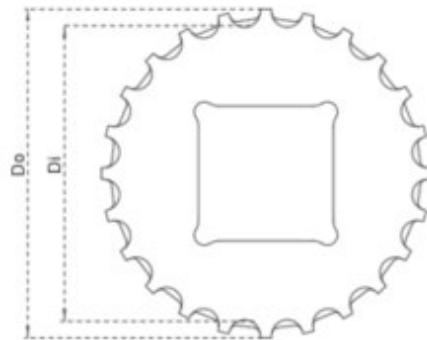
Standard Belt Widths

WIDTH (W)				BELT WIDTH TOLERANCE (max.)
PP-PE		POM		
mm	inch	mm	inch	
101,60	4.0	101,60	4.0	± 1 mm
203,20	8.0	203,20	8.0	± 1 mm
304,80	12.0	304,80	12.0	± 1 mm
406,40	16.0	406,40	16.0	± 1 mm
508,00	20.0	508,00	20.0	± 2 mm
609,60	24.0	609,60	24.0	± 2 mm
711,20	28.0	711,20	28.0	± 2 mm
812,80	32.0	812,80	32.0	± 2 mm
914,40	36.0	914,40	36.0	± 2 mm



- Standard belt increments 76,2mm
 - Non-standard belt increments 15,2mm
- Please contact with customer service for precise belt measurements

Sprockets and Technical Specifications



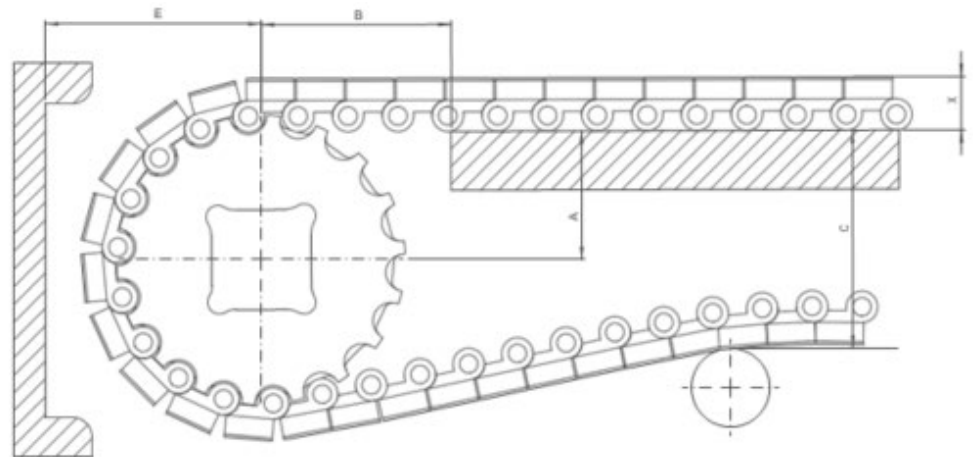
Standard Sprocket Dimensions

NUMBER OF TEETH	Di mm / inch	Do mm / inch	B mm / inch	A mm / inch	Square Bore (Q) mm / inch	Round Bore (R) mm / inch	PRODUCT CODE	
							Square Type (Q)	Round Type (R)
Z15	51,9 / 2.04	61,4 / 2.42	2 / 0.08	25 / 1.0	25 / 1-1.25	25-30 / 1-1.25	FL-HC-127SQZ15	FL-HC-127SRZ15
Z16	55,9 / 2.20	65,5 / 2.58	2 / 0.08	25 / 1.0	25 / 1-1.25	25-30 / 1-1.25	FL-HC-127SQZ16	FL-HC-127SRZ16
Z17	59,9 / 2.36	69,5 / 2.74	2 / 0.08	25 / 1.0	25 / 1-1.25	25-30 / 1-1.25	FL-HC-127SQZ17	FL-HC-127SRZ17
Z18	63,9 / 2.52	73,6 / 2.90	2 / 0.08	25 / 1.0	25-40 / 1-1.50	25-30 / 1-1.25	FL-HC-127SQZ18	FL-HC-127SRZ18
Z19	68,0 / 2.68	77,7 / 3.06	2 / 0.08	25 / 1.0	25-40 / 1-1.50	25-30 / 1-1.25	FL-HC-127SQZ19	FL-HC-127SRZ19

- * All required sprockets produced by CNC
- * Other sprockets and hub sizes are manufactured upon request
- * POM (Polyacetal) and PP (Polypropylene) sprockets are available upon request
- * Machined split sprockets are available for each size

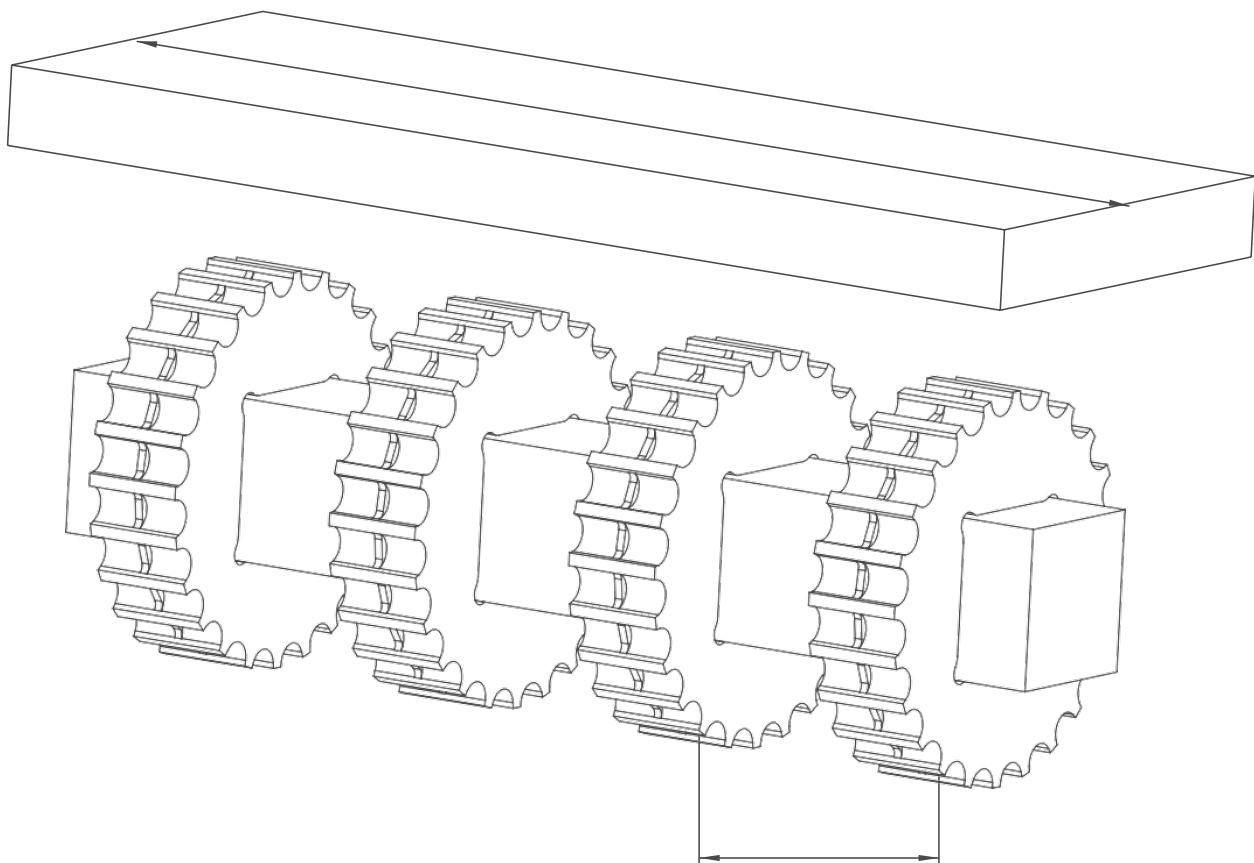
Engineering Information

A - ± 0,031" (1mm)
B - ± 0,125" (3mm)
C - ± (Max.)
E - ± (Min.)



Conveyor Frame Dimensions

SPROCKETS DESCRIPTION			A		B		C		E		X	
Pitch Diameter		Number of teeth	Range (Bottom to Top)		inch	mm	inch	mm	inch	mm	inch	mm
inch	mm		inch	mm								
FabLink®HC12.7.C												
3.09	78,4	19	1.37	34,7	1.56	39,7	1.94	49,4	1.84	46,7	0.31	8,0
3.86	98,0	24	1.77	44,9	1.97	50,0	2.75	69,8	2.24	56,9	0.31	8,0
5.83	148,0	36	2.74	69,5	2.94	74,7	4.69	119,0	3.21	81,5	0.31	8,0
FabLink®HC12.7.BLB												
3.09	78,4	19	1.37	34,7	1.56	39,7	2.17	55,0	2.06	52,3	0.53	13,56
3.86	98,0	24	1.77	44,9	1.97	50,0	2.97	75,4	2.46	62,5	0.53	13,56
5.83	148,0	36	2.74	69,5	2.94	74,7	4.90	124,6	3.43	87,1	0.53	13,56



Sprockets Arrangement

Standard Belt Width		Number of sprockets per shaft		A (mm/inch)	
mm	inch	Drive Shaft	Return Shaft	Min.	Max.
101,6	4.0	2	2	50 / 2	100 / 4
203,2	8.0	3	2	50 / 2	100 / 4
304,8	12.0	4	3	50 / 2	100 / 4
406,4	16.0	5	3	50 / 2	100 / 4
508,0	20.0	6	4	50 / 2	100 / 4
609,6	24.0	7	5	50 / 2	100 / 4
711,2	28.0	8	6	50 / 2	100 / 4
812,8	32.0	9	7	50 / 2	100 / 4
914,4	36.0	10	8	50 / 2	100 / 4
1016,0	40.0	11	9	50 / 2	100 / 4
1117,6	44.0	12	9	50 / 2	100 / 4
101,6	4.0	2	2	50 / 2	100 / 4