



FabLink®-EC12.7.FG

Bakery Applications

Divider, Oven Infeed - Outfeed, Cooling Lines, Coating Lines, [Glazing Lines](#)

Poultry Applications

Breeding Lines and Grading Lines, Weighing Lines

Seafood Applications

Breeding Lines, Grading Lines and Weighing Lines

Snack Food Applications

Cooling Lines

Fruits and Vegetables Applications

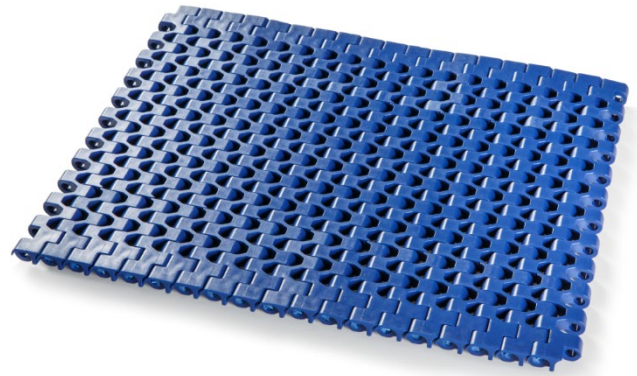
Draining, Sterilization, Conveyance

Packaging Applications

Check Weighers, Filling, Palletizing - Depalletizing, Box Transfer

FabLink®-EC12.7.FG

Pitch	12,7 mm / 0,5 inch
Belt surface	Open, Smooth surface
Minimum width	50 mm / 1,97 inch
Open Area (%)	20% (Biggest opening 3 x 6 mm)
Cleat	Yes (T25, T50)
Sidewall	No
Pin	Ø 4,7 mm / 0,185 inch – Slef lock
Approved	FDA and EU
Curve	No
Color	Additional colors available
Cleanability	Excellent
Belt thickness	10 mm / 0,394 inch



Product Features and Functional Benefits

- Belt provides optimal open area for drainage and airflow
- Less friction and product contact for easy cooking, cooling and freezing of products
- Reduced dirt and oxide build due to self-cleaning surface
- Belt provides optimal open area for drainage and airflow

Available Moulded Module Sizes

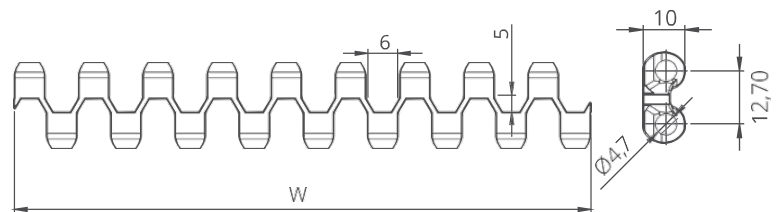
- 150 mm / 5.90 inch module
- 100 mm / 3.94 inch module

Technical Information

BELT MATERIAL	BELT STRENGTH				TEMPERATURE		BELT WEIGHT Kg/m ² / lb/ft ²
	Straight		Curve		°C / ° F (min.)	°C / ° F (max.)	
	N/mm	lb/ft	N/mm	lb/ft			
Polypropylene (PP)	12100	825	-	-	+5 / +41	+90 / +194	5,5 / 1,07
Polyethylene (PE)	6600	452	-	-	-73 / -99	+66 / +150.8	5,8 / 1,11
Acetal (POM)	19800	1356	-	-	-43 / -45	+110 / +230	7,9 / 1,48

Standard Belt Widths

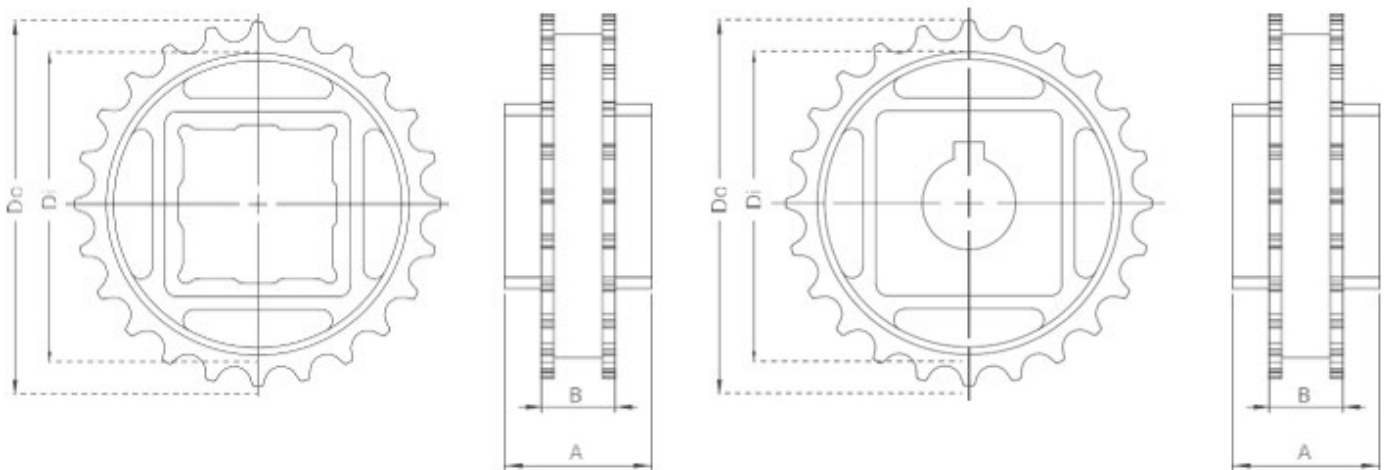
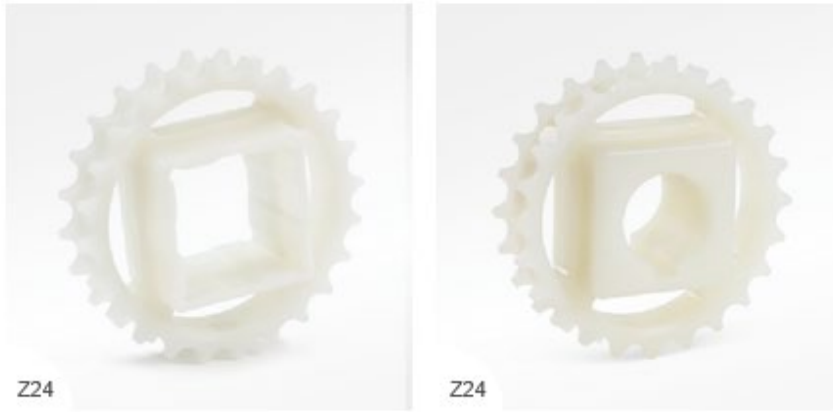
WIDTH (W)				BELT WIDTH TOLERANCE (max.)
PP-PE		POM		
mm	inch	mm	inch	
150,0	5.90	150,0	5.90	± 1 mm
200,0	7.87	200,0	7.87	± 1 mm
250,0	9.84	250,0	9.84	± 2 mm
300,0	11.81	300,0	11.81	± 2 mm
350,0	13.77	350,0	13.77	± 2 mm
400,0	15.75	400,0	15.75	± 2 mm
450,0	17.71	450,0	17.71	± 2 mm
500,0	19.69	500,0	19.69	± 2 mm
550,0	21.65	550,0	21.65	± 2 mm
600,0	23.62	600,0	23.62	± 3 mm
650,0	25.60	650,0	25.60	± 3 mm
700,0	27.56	700,0	27.56	± 3 mm
750,0	29.50	750,0	29.50	± 3 mm
800,0	31.50	800,0	31.50	± 3 mm
850,0	33.46	850,0	33.46	± 4 mm
900,0	33.46	850,0	33.46	± 4 mm



- Standard belt increments 50mm
- Non-standard belt increments 16.6mm

Please contact with customer service for precise belt measurements

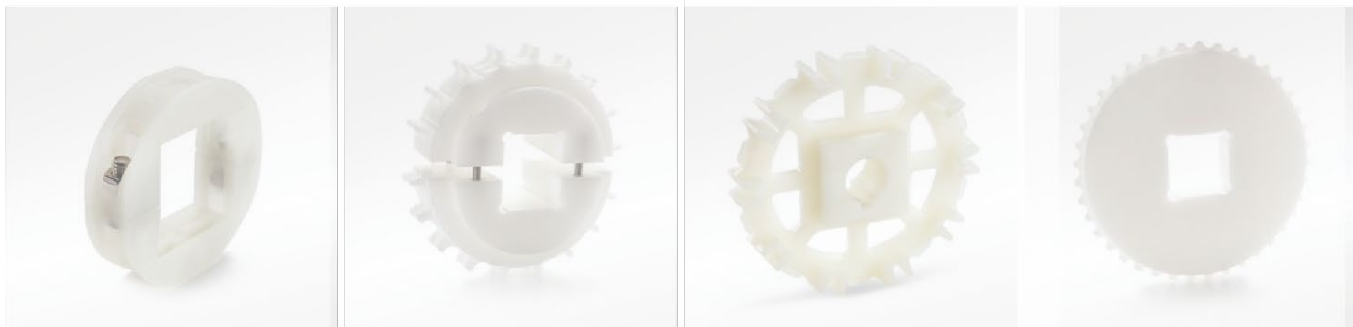
Sprockets and Technical Specifications



Standard Sprocket Dimensions

NUMBER OF TEETH	Di mm / inch	Do mm / inch	B mm / inch	A mm / inch	Square Bore (Q) mm / inch	Round Bore (R) mm / inch	PRODUCT CODE	
							Square Type (Q)	Round Type (R)
Z19	68,5 / 2.69	78,0 / 2.54	20 / 0.79	40 / 1.57	25-40 / 1-1.5	25-30 / 1-1.25	FL-EC-12.7SQZ19	FL-EC-12.7SRZ19
Z24	88,7 / 3.49	98,8 / 3.89	20 / 0.79	40 / 1.57	25-40 / 1-1.5	25-30 / 1-1.25	FL-EC-12.7SQZ24	FL-EC-12.7SRZ24
Z28	105,0 / 4.13	115,2 / 4.53	20 / 0.79	40 / 1.57	25-40 / 1-1.5	25-30 / 1-1.25	FL-EC-12.7SQZ28	FL-EC-12.7SRZ28
Z30	113,0 / 4.44	123,3 / 4.85	20 / 0.79	40 / 1.57	25-40 / 1-1.5	25-30 / 1-1.25	FL-EC-12.7SQZ30	FL-EC-12.7SRZ30
Z36	137,5 / 5.41	148,0 / 5.82	20 / 0.79	40 / 1.57	25-40 / 1-1.5	25-30 / 1-1.25	FL-EC-12.7SQZ36	FL-EC-12.7SRZ36

- * Other sprockets and hub sizes are manufactured upon request
- * POM (Acetal) and PP (Polypropylene) sprockets are available upon request
- * Machined split sprockets are available for each size



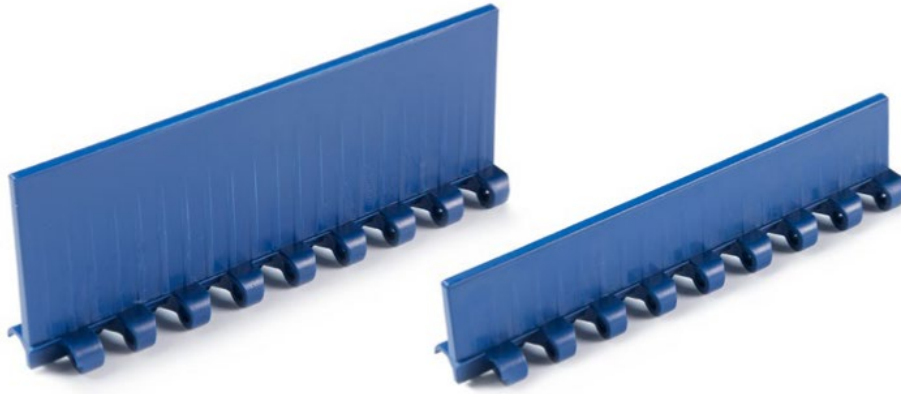
Clamp

Machined Split Sprocket

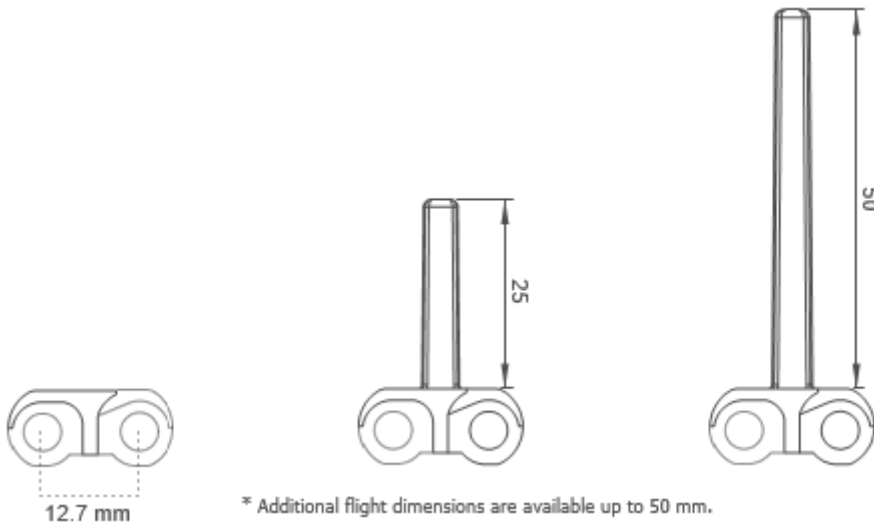
Moulded Sprocket

Machined Sprocket

Accessories and Technical Specifications



CLEATS AND SIDEWALLS				
Product code	Cleat Height (mm / inch)	Cleat Width (mm / inch)	Product code	Sidewall Height (mm / inch)
FL-EC-12.7.T25	25 / 1	150 / 5.90	-	-
FL-EC-12.7.T25	50 / 2	150 / 5.90	-	-



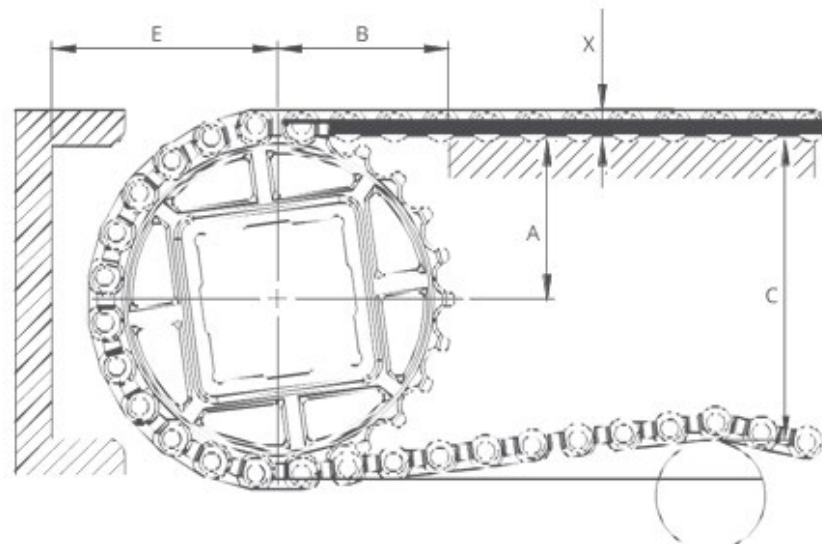
* Additional flight dimensions are available up to 50 mm.

POSSIBLE Cleat Indents	Z	
	mm	inch
Standard, module cutting	33,3	1.31
Standard, no module cutting	50,0	1.97
Standard, module cutting	66,6	2.62
Standard, module cutting	83,3	3.28
Standard, no module cutting	100,0	3.94



Non-standard Cleat is upon request

Engineering Information

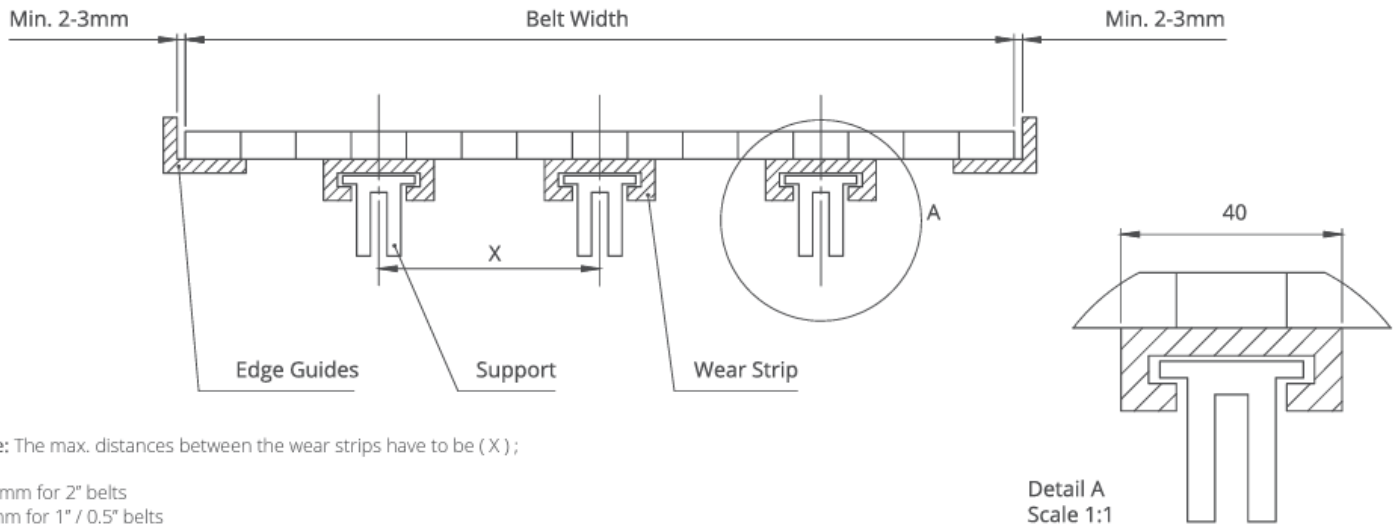


A - $\pm 0,031''$ (1mm) C - \pm (Max.)
 B - $\pm 0,125''$ (3mm) E - \pm (Min.)

Conveyor Frame Dimensions

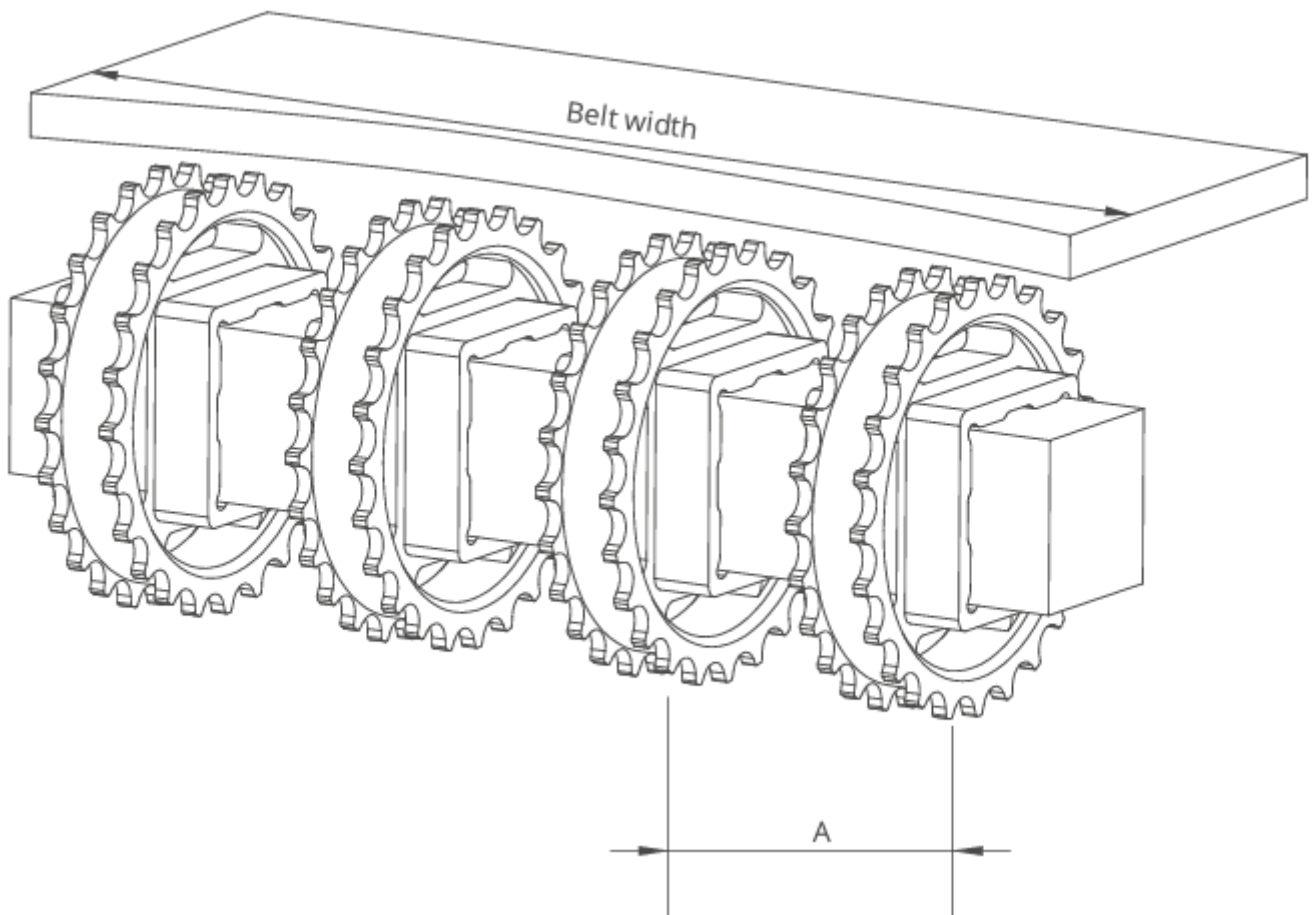
SPROCKETS DESCRIPTION		A		B		C		E		X		
Pitch Diameter		Range (Bottom to Top)		inch	mm	inch	mm	inch	mm	inch	mm	
inch	mm											Number of teeth
FabLink®-EC12.7.C / FabLink®- EC12.7.FG												
2.89	73,4	19	1.36	34,5	1.67	42,5	2.83	72,0	2.09	53,0	0.39	10,0
3.69	93,8	24	1.73	44,0	1.89	48,0	3.23	82,0	2.48	63,0	0.39	10,0
4.33	110,1	28	2.07	52,5	2.05	52,0	3.86	98,0	2.80	71,0	0.39	10,0
4.66	118,3	30	2.24	57,0	2.13	54,0	4.02	102,0	2.95	75,0	0.39	10,0
5.62	142,7	36	2.72	69,0	2.35	59,8	4.96	126,0	3.43	87,0	0.39	10,0
FabLink®-EC12.7.GT												
2.89	73,4	19	1.46	37,0	1.67	42,5	2.83	72,0	2.19	55,5	0.49	12,5
3.69	93,8	24	1.83	46,5	1.89	48,0	3.23	82,0	2.58	65,5	0.49	12,5
4.33	110,1	28	2.17	55,0	2.05	52,0	3.86	98,0	2.89	73,5	0.49	12,5
4.66	118,3	30	2.34	59,5	2.13	54,0	4.02	102,0	3.05	77,5	0.49	12,5
5.62	142,7	36	2.81	71,5	2.35	59,8	4.96	126,0	3.52	89,5	0.49	12,5

Slider Support System for Straight Running Belts



Note: The max. distances between the wear strips have to be (X);

125 mm for 2" belts
80 mm for 1" / 0.5" belts



Sprockets Arrangement

Standard Belt Width		Number of sprockets per shaft		A (mm/inch)	
mm	inch	Drive Shaft	Return Shaft	Min.	Max.
150,0	5.91	2	2	50 / 2.00	100 / 4.00
200,0	7.87	3	2	50 / 2.00	100 / 4.00
250,0	9.84	3	2	50 / 2.00	100 / 4.00
300,0	11.81	4	3	50 / 2.00	100 / 4.00
350,0	13.78	4	3	50 / 2.00	100 / 4.00
400,0	15.75	5	3	50 / 2.00	100 / 4.00
450,0	17.72	5	3	50 / 2.00	100 / 4.00
500,0	19.69	6	4	50 / 2.00	100 / 4.00
550,0	21.65	7	4	50 / 2.00	100 / 4.00
600,0	23.62	7	4	50 / 2.00	100 / 4.00
650,0	25.59	7	4	50 / 2.00	100 / 4.00
700,0	27.56	8	5	50 / 2.00	100 / 4.00
750,0	29.53	9	6	50 / 2.00	100 / 4.00
800,0	31.50	9	6	50 / 2.00	100 / 4.00
850,0	33.46	10	7	50 / 2.00	100 / 4.00
900,0	35.43	11	7	50 / 2.00	100 / 4.00
950,0	37.40	11	7	50 / 2.00	100 / 4.00
1000,0	39.37	11	7	50 / 2.00	100 / 4.00
1050,0	41.34	11	7	50 / 2.00	100 / 4.00
1100,0	43.31	12	7	50 / 2.00	100 / 4.00
1150,0	45.28	12	7	50 / 2.00	100 / 4.00
1200,0	47.24	12	7	50 / 2.00	100 / 4.00
1250,0	49.21	13	8	50 / 2.00	100 / 4.00
1300,0	51.18	13	8	50 / 2.00	100 / 4.00
1350,0	53.15	13	8	50 / 2.00	100 / 4.00
1400,0	55.12	14	8	50 / 2.00	100 / 4.00